

Toner Container Replacement

When toner runs low, "Toner is low." appears in the message display. Make sure you have a new toner container available for replacement.

When the message displays "Replace the toner.", replace the toner.

Frequency of Toner Container Replacement

The life of the toner containers depends on the amount of toner required to accomplish your printing jobs. According to ISO/IEC 19798 and EcoPrint switched off the toner container can print as follows (A4/Letter paper is assumed):

Toner Color	Life of the Toner Container (Printable pages)	
	ECOSYS P6235cdn	ECOSYS P7240cdn
Black	13,000 images	17,000 images
Cyan	11,000 images	13,000 images
Magenta	11,000 images	13,000 images
Yellow	11,000 images	13,000 images

NOTE

- The average number of pages that can be printed by the toner containers included with the machine are as follows. ECOSYS P6235cdn: Black (K): 6,000 images. Cyan (C), Magenta (M), Yellow (Y): 5,000 images. ECOSYS P7240cdn: Black (K): 8,000 images. Cyan (C), Magenta (M), Yellow (Y): 6,000 images.
- To maintain quality, we recommend using genuine Kyocera toner containers, which must pass numerous quality inspections.
- The memory chip in the toner container of this product stores information necessary for improving customer convenience, operation of the recycling system for used toner containers, and planning and development of new products. The stored information does not include information that makes it possible to identify individuals, and is only used anonymously for the above purposes.

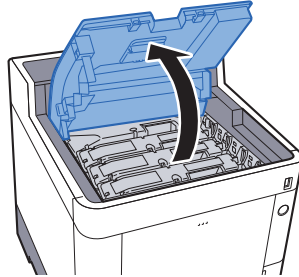
CAUTION

Do not attempt to incinerate parts which contain toner. Dangerous sparks may cause burns.

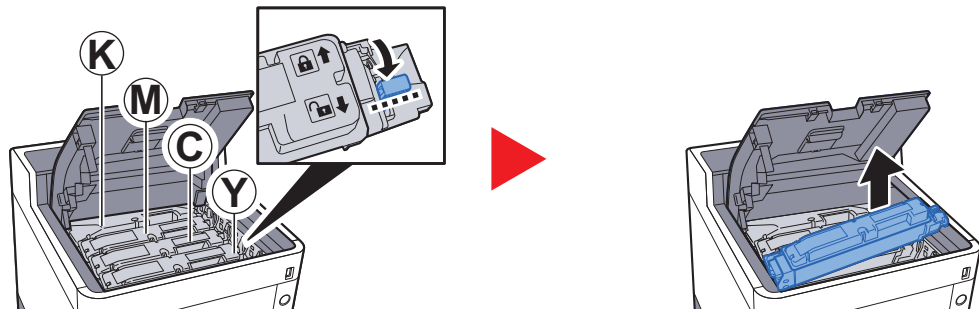
Replacing the Toner Container

Installation procedures of the toner container is same for every color. The procedures here represent the yellow toner container.

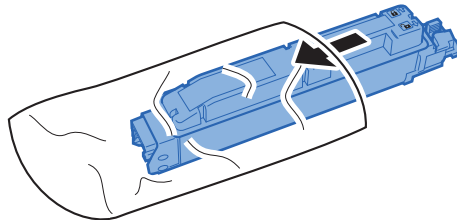
1



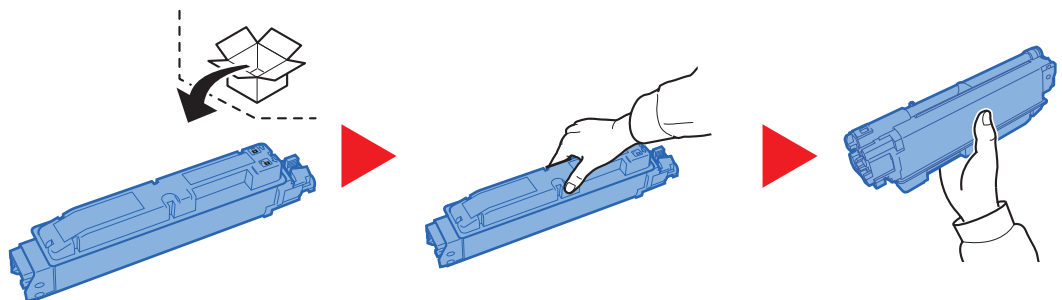
2



3

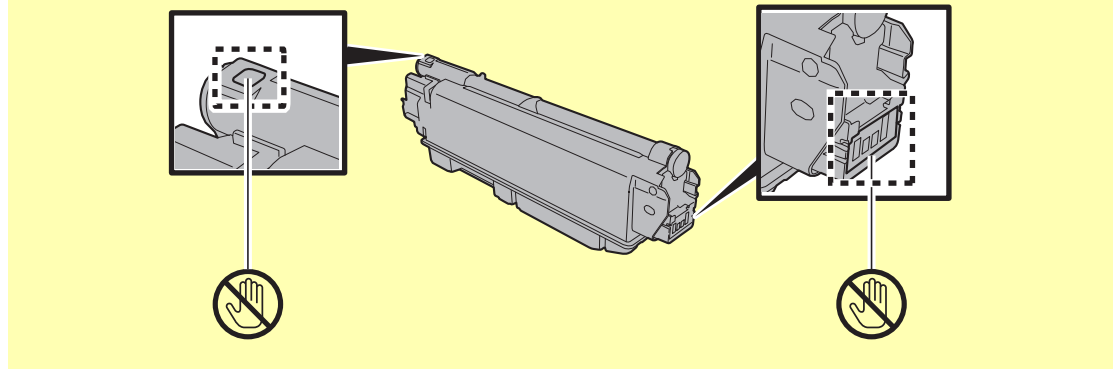


4

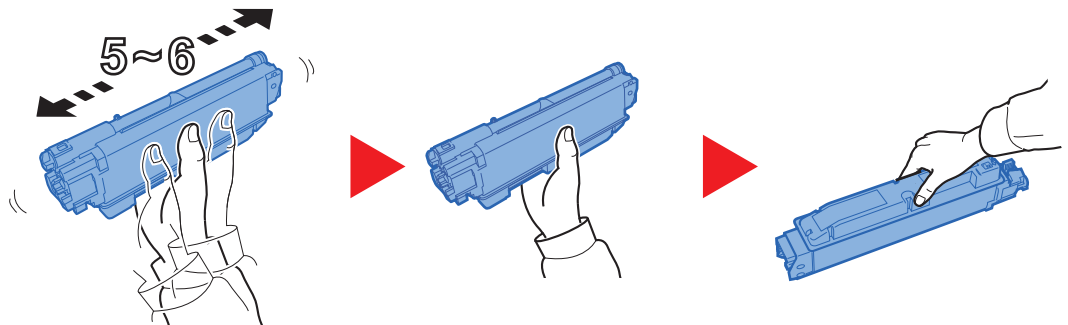


✔ **IMPORTANT**

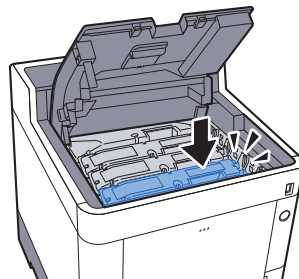
Do not touch the points shown below.



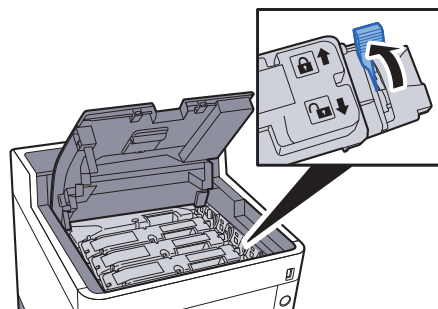
5



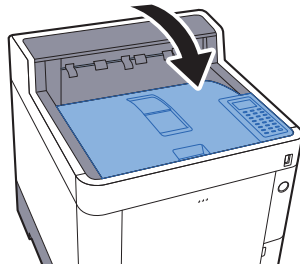
6



7



8



NOTE

- If the Upper Tray does not close, check that the new toner container is installed correctly (in step 6).
- Return the exhausted toner container to your dealer or service representative. The collected toner container will be recycled or disposed in accordance with the relevant regulations.