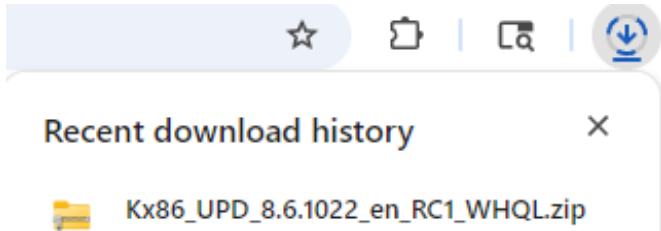


INSTALLING DRIVER – WINDOWS PC

1. Click **Download KX Driver for Windows** above

[Download KX Driver for Windows](#)

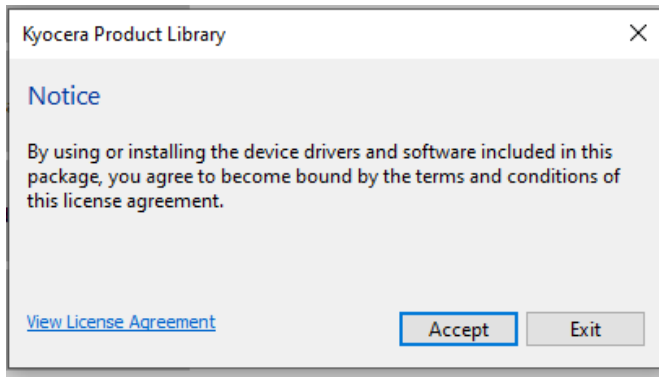
2. Then click on the downloaded .zip file located in the upper-right corner of your browser.



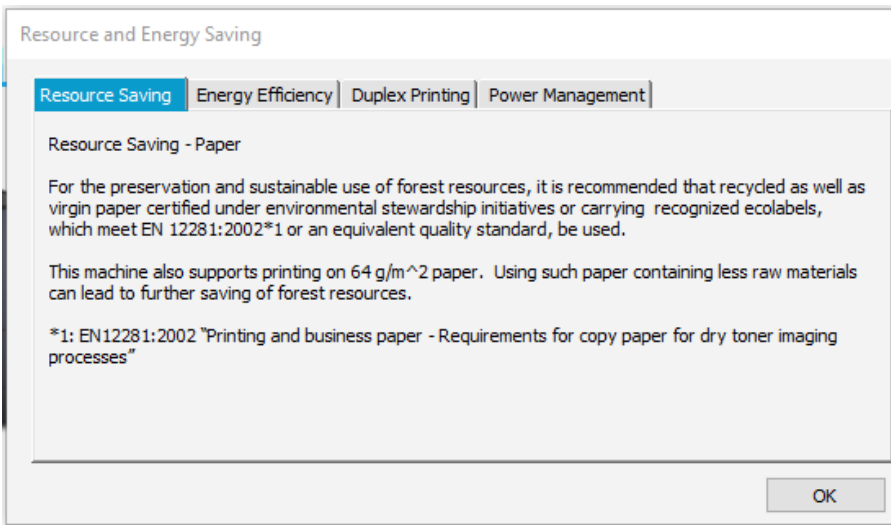
3. Open the Kx86 folder. Find and click on the Setup Application File.



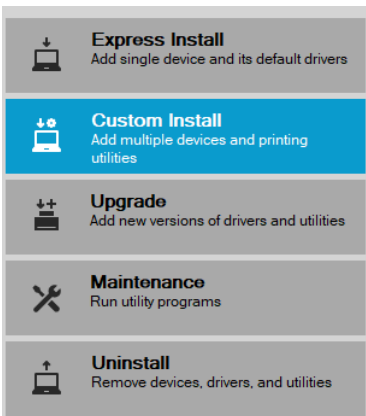
4. Once the Program opens click Accept to continue with the installation



5. Then click OK in the Resource and Energy Saving window to continue

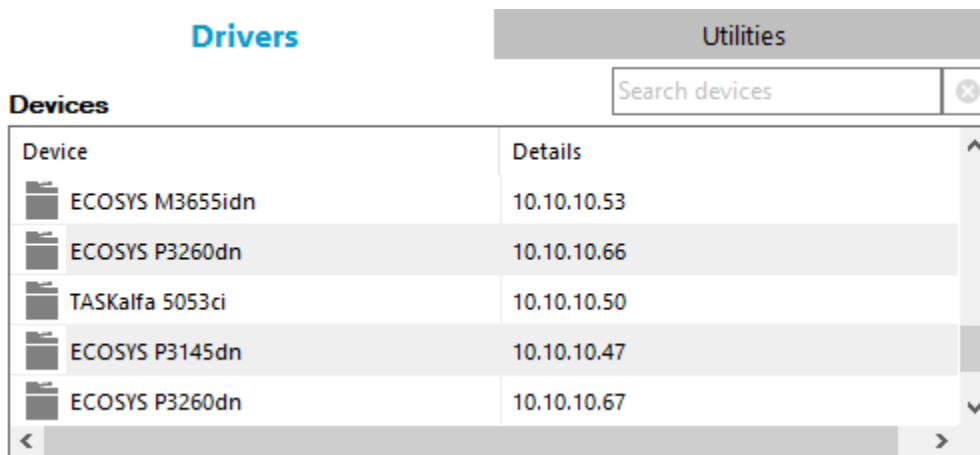


6. Click Custom Install



7. Here you should see your printer show up in the list below, if you do not see your device you can type in the IP address in the box that says "Search Devices".

a. **MAKE SURE TO USE THE ###.###.###.### STYLE IP ADDRESS.**



b. If the device is still not showing up it means your device is either not connected to the network or is not on the same network your computer is on.

8. Select your device, then click the arrow located to the right of the box to add it to the installation list.

Drivers Utilities

Search devices

Devices

Device	Details
ECOSYS M6535cidn	fe80::217:c8ff:fe02:b515
CS 8052ci	10.10.10.65
ECOSYS P3145dn	10.10.10.56
ECOSYS P3260dn	10.10.10.55
ECOSYS M3655idn	10.10.10.53

0 of 24 devices selected

SNMP Settings + Add custom device

Products to Install

CS 3252ci (10.10.10.48)	Edit Delete
-------------------------	-------------

9. Click “KX Driver” and then click the arrow to the right of the box to add it to the install list

Drivers Utilities

Search devices

Devices

Device	Details
ECOSYS M6535cidn	fe80::217:c8ff:fe02:b515
CS 8052ci	10.10.10.65
ECOSYS P3145dn	10.10.10.56
ECOSYS P3260dn	10.10.10.55
ECOSYS M3655idn	10.10.10.53

0 of 24 devices selected

SNMP Settings + Add custom device

Drivers

Name	Description
KX DRIVER	(Upgradable) (Recommended) Extended-fu...
KX DRIVER for Universal Printing	Install a generic driver for networked Kyoce...

Products to Install

CS 3252ci (10.10.10.48)	Edit Delete
KX DRIVER	Edit Delete

2 items

10. Click Install



11. Once the install is done click all three boxes so only Print test page is checked and click finish.

Finished

Your software is ready to use.

Product	Details
✓ KX DRIVER	Installed...Kyocera CS 3252ci KX (1)
✓ Uninstaller	Installed



-  Print a test page
-  Set Duplex as default
-  Show Quick Print tab

Finish

12. Once you verify the test page printed close out of the program and you are all finished.